



## Freebie Directions

- Place the silent e page on the bottom. Then place the jellyfish page on top, aligning the pages so each silent e lines up beneath a jellyfish image.
- Apply a thin layer of glue to the front of the silent e page. Carefully press the jellyfish page on top, keeping everything aligned.
- Once glued, laminate the entire sheet to make it durable for repeated use. Be sure all edges are fully sealed.
- After laminating, cut along the green lines to separate the cards. Trim cleanly around the edges.
- Shine a light behind each card. The silent e will glow through the jellyfish image, helping students see how it changes the word and its pronunciation!

cap



pin



kit



tap



not



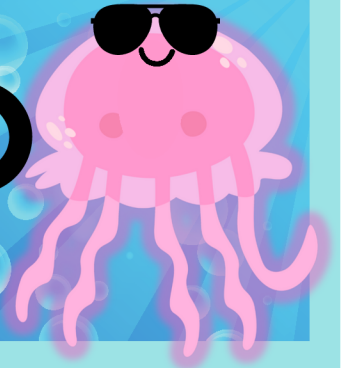
cub



hop



rob



e

e

e

e

e

e

e

e



rat



mad



rat



hid



can



tub



cut



cod





e

e

e

e

e

e

e

e