



institute for multi-sensory education

CASE STUDY



Goshen County School District #1 Torrington, WY

Goshen County School District #1 serves students across 12 schools in rural eastern Wyoming. With four systems spread across a large geographic region, the district's size and rural terrain shape school configuration and instructional planning.

Goshen County has committed to Structured Literacy, building a shared foundation of explicit, sequential, and multi-sensory instruction aligned with the science of reading. District leaders credit this work with strengthening literacy systems and creating a common language around what it takes to become a reader.

District Profile



12
Schools



K-5
Grades



21.6%
Minority Enrollment



32.8%
Free or Reduced
Lunch Eligible



CHALLENGE

Goshen County School District #1 recognized the need to strengthen early literacy instruction and ensure all students developed strong foundational reading skills. District leaders sought an evidence-based approach aligned with the science of reading that could support struggling readers and bring consistency across classrooms.

Also, with its 12 schools spread across a large rural region, GCSD #1 found that smaller school settings and staffing changes often disrupted instructional pacing. This reinforced the need for shared routines, common language, and sustainable systems of support district-wide.



IMSE was selected because of its commitment to a structured, explicit, sequential, and multisensory approach to literacy instruction."

Kevin Derby
Director of Curriculum and Instruction for
Goshen County School District



SOLUTION

Goshen County has committed to building literacy capacity across every school through structured, explicit, sequential, and multi-sensory instruction aligned with the science of reading. Every K-5 teacher in the district has been trained in Comprehensive OG+, ensuring consistent instructional routines and a common foundation for early literacy across all 12 schools.

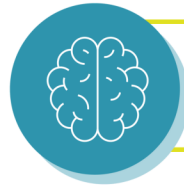
The district expanded this work into upper elementary grades, with all teachers in grades 3-5 trained in Morphology Plus. Morphology Plus is now used as core instruction in grades 3-5 and extends into one sixth grade class, strengthening literacy development beyond foundational decoding and into deeper word study and language structures. Supported in part by a CLSD grant awarded in 2022, Goshen has continued to invest in long-term implementation.

District leaders emphasize that training only goes so far, and sustained success requires ongoing support through coaching, walkthroughs, and strong principal knowledge. IMSE's coaching has played a pivotal role in strengthening Goshen County's literacy system, with 479 total coaching days between 2021 and 2026, including intensive engagement in 2022 (143 days), 2023 (148 days), and 2024 (115 days), to build instructional capacity and long-term sustainability across schools.



This sustained partnership helped refine instructional practices across classrooms, supported instructional coaches and principals, and guided our early literacy teachers in developing a curriculum for preschool-aged learners across Goshen County."

Kevin Derby



RESULTS

Goshen County's long-term commitment to Structured Literacy has produced measurable, district-wide gains in student reading outcomes. Across 12 schools and four systems, the district has demonstrated that patience and persistence are key, particularly in rural settings where smaller schools face unique implementation challenges.

Key Outcomes:

2021-2025 School Years

- Literacy proficiency rose from 64% in 2021 to **over 75%** in 2025.
- Cohort data show **steady growth** in early literacy outcomes across grades K-5.
- Sustained IMSE training and coaching **strengthened instruction district-wide.**
- Early literacy expansion now includes preschool-aged learners.

As Structured Literacy practices deepened, Goshen County saw a clear cultural shift across classrooms. Leaders noted that as results improved, resistance decreased, and educators became more confident in the routines, shared language, and instructional consistency IMSE brought district-wide.

Benchmark data show significant growth over time. District literacy proficiency increased from **64% in 2021 to over 75% in 2025**, and cohort data from kindergarten through fifth grade reflect steady gains in early literacy composite scores year over year, reinforcing the impact of consistent multi-sensory Structured Literacy instruction and strong systems of support.



198

TEACHERS TRAINED
THROUGHOUT
GOSHEN DISTRICT #1



142

EDUCATORS
TRAINED IN
ORTON-GILLINGHAM+



479

COACHING
DAYS
2021-2025

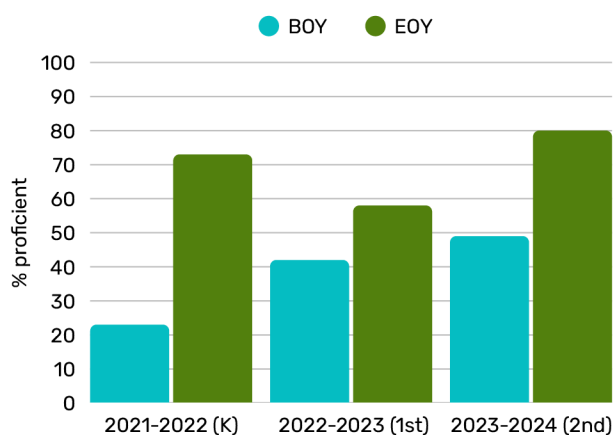


89

EDUCATORS
TRAINED IN
MORPHOLOGY+

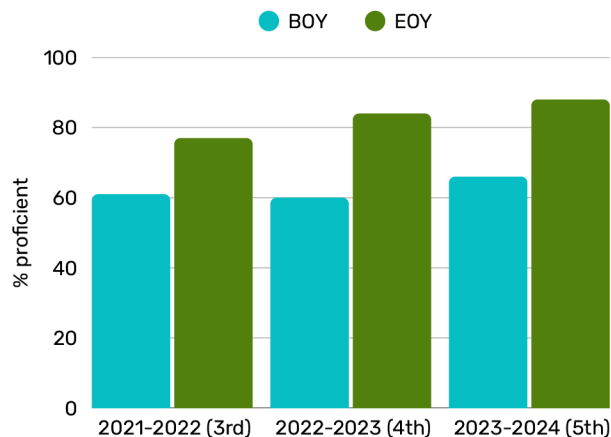
Goshen K-2 Longitudinal Cohort Data

AIMS WEB Early Literacy Composite Scores



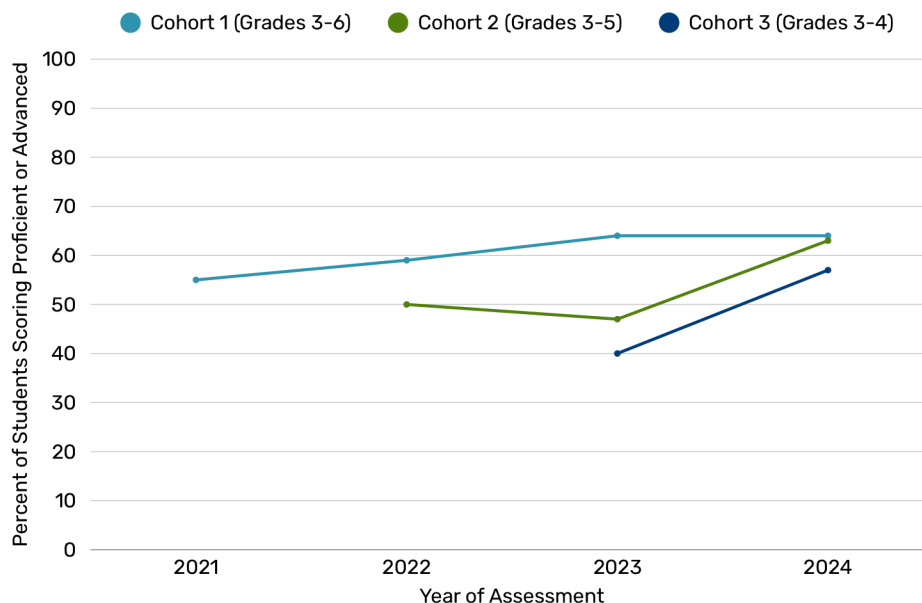
Goshen 3-5 Longitudinal Cohort Data

AIMS WEB Early Literacy Composite Scores



WY-TOPP Summative Assessment Scores

Longitudinal Data Per Student Cohort



District and State Comparative ELA Data

Increase from SY 22-23 to SY 23-34

	DISTRICT			STATE		
Grade-Level Transition	SY 22-23	SY 23-24	Total % Increase	SY 22-23	SY 23-24	Total % Increase
3-4	39.06	55.74	16.68	48.25	49.67	1.42
4-5	46.28	60.87	14.59	45.48	54.56	9.08
5-6	60.83	62.5	1.67	54.87	58.6	3.73



LOOKING AHEAD

Goshen County School District #1 continues to build on this strong foundation, investing in professional learning, coaching, and systems that ensure every student has access to effective, science-aligned literacy instruction.

Through its partnership with IMSE, the district is strengthening outcomes not only for today's learners, but for future generations across Wyoming.



EVIDENCE
for **ESSA**



ABOUT IMSE

IMSE is an education pioneer and the leading provider of Structured Literacy solutions based on the science of reading. IMSE solutions incorporate the Orton-Gillingham methodology and all five pillars of literacy to empower teachers from day one.

Institute for Multi-Sensory Education
2000 Town Center, Suite 2000
Southfield, MI 48075

Contact info@imse.com to learn more about our work with school districts around the country.

